

SHINE

everywhere



# Welcome!

Please open the chat.

Type your name, church, denomination, and location.

Then, tell us *in six or fewer words*, what brings you to this gathering?





# Introductions

**Shana Peachey Boshart, Shine Everywhere Project Facilitator**

**Joan Daggett, Shine Project Director**

**Rachel Nussbaum Eby, Shine Managing Editor**

**Joyce Peachey Lind, Shine Curriculum Editor (starting May 1, 2024)**

**Alyssa Bennett Smith, MennoMedia Digital Marketing Manager, for tech support**



# How Did We Get Here?

## Pandemic Pivots

- Shine at Home Digital Curriculum
- Shine at Home Weekly Activities

## Fall 2022 Blue Sky Retreat

- [ShineFamilies.org](https://www.ShineFamilies.org)

## Lilly Endowment Christian Parenting and Caregiving Initiative

**1. Support congregations** by developing and providing resources, programs and educational opportunities that will create and/or strengthen ministries to help interested parents and caregivers share their Christian faith and values with their children.

**2. Support Christian parents and caregivers** by developing and providing resources and programs to help them learn, adapt and embrace time-honored practices to share their Christian faith and values with their children.



# What Is Shine Everywhere?

**It is Shine Curriculum listening to churches and families and, in response, creating products for use at home.**

**Churches will tell families about the at-home product. Families will use it and tell us how it worked.**

**How we will listen:**

- **Digital surveys for those who use the products**
- **Zoom roundtables for church leaders and parents**
- **Zoom cohorts for pastors and congregational leaders**

**We'll create the next product, and the cycle continues.**



# What Is Shine Everywhere?

**Along the way, Shine Everywhere will become a community of churches and families who discover and practice the everywhere habits that grow faith.**

**We will...**

- **Share tips on the practices that form faith at home best.**
- **Create spaces for hearing from other church leaders and parents what is working for them.**
- **Tell you what we are learning.**

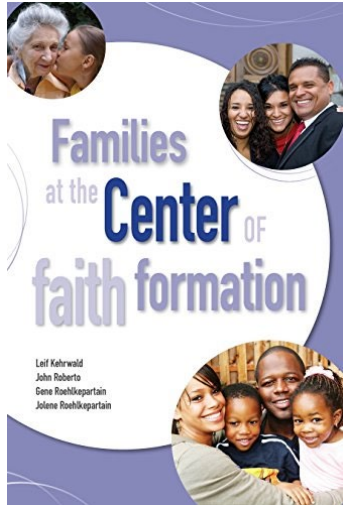


# Shine Everywhere Needs You

## Ways you can be involved

- Please fill out our interest form, linked in the chat, before you leave this webinar.
- Join the Shine Everywhere Facebook group and engage in the conversation there.
- Apply to be in a Zoom Cohort or Zoom Roundtable.
- Church leaders: Share our test products with your families.
- Families: Use our test products and fill out the surveys on how they work for you.

# Practices that Grow Faith at Home







# Practices that Grow Faith at Home

**Have a question as we present?**

**Please ask it in the Q & A feature as you think of it.**

# Practices that Grow Faith at Home

Talk together



# Practices that Grow Faith at Home

Pray together





# Practices that Grow Faith at Home

Celebrate moments, milestones, and holidays



# Practices that Grow Faith at Home

Serve others together



# Practices that Grow Faith at Home

Learn and grow in your faith





# Practices that Grow Faith at Home

Worship together at church





# Practices that Grow Faith at Home

Parents can choose practices they will do at home.

Churches can share these practices with parents and provide settings where parents can get ideas, make a plan, and share how it's going.

Please tell us how you are doing these practices and what happens when you do.







# Practices that Grow Faith at Home

**In the chat, share a takeaway about the six practices.**

**In the Q & A, ask any questions.**



# What's Next for Shine Everywhere

New for summer—or anytime!



- An at-home product
- Follows the “Peace with Creation” Peace Path in *The Peace Table*
- Not tied to the *Path to Peace* Curriculum – churches can purchase these for families whether or not they have summer Sunday school
- A pilot product for the Shine Everywhere initiative

## Are you ready to follow the Peace Path?

The "Follow the Peace Path" Cards coordinate with the three "Peace with Creation" Peace Paths described on page 16 in *The Peace Table: A Storybook Bible*, available at [www.ShineCurriculum.com](http://www.ShineCurriculum.com). The cards for each path are marked with the path name and a colored border:

**Nature Trail:** green border  
**Let It Grow:** yellow border  
**Water Wonders:** blue border

### Instructions:

Choose a card from the deck. Read the focus verse on the card or the full Bible story from *The Peace Table*. Pick one or more activities from the card to do together. There are three cards for each Bible story, with matching art on the back.

**LET'S PRAY** **Let's Pray:** Refer to the cards with an orange border for 12 interactive creation-focused prayer ideas.



**LET'S PLAY** **Let's Play:** Refer to the instructions on the cards with a purple border to play three simple card games with this deck.



**PEACE WITH GOD**

**God Welcomes All**  
 (PAGE 30)  
 Hagar  
 Strong Sisters  
 Zacchaeus  
 The Road to Ethiopia  
 Good News for All

**God's Spirit Moves**  
 (PAGE 110)  
 A New King  
 Speak to the Bones  
 My Beloved Son  
 A Nighttime Visitor  
 Pentecost

**God Is Amazing**  
 (PAGE 60)  
 In the Wilderness  
 Bow or Burn  
 A Hungry Crowd  
 Lazarus, Come Out!  
 The Empty Tomb

**PEACE INSIDE**

**I Am Special**  
 (PAGE 88)  
 Song of Wonder  
 Written on Your Heart  
 Born in Bethlehem  
 Let the Children Come  
 One Body, Many Gifts

**I Need Comfort**  
 (PAGE 114)  
 Fly like an Eagle  
 Song of Shelter  
 Birds and Flowers  
 Peace I Leave with You  
 God Is Near

**I Am Not Alone**  
 (PAGE 86)  
 Song of a Shepherd  
 Lift the Valleys  
 The Good Shepherd  
 Parables of the Lost  
 Worthy Is the Lamb

**PEACE WITH OTHERS**

**Love Your Enemies**  
 (PAGE 40)  
 Isaac and His Neighbors  
 Abigail's Idea  
 Swords and Plows  
 Love Your Enemies  
 Jesus Is Our Peace

**Family Problems**  
 (PAGE 28)  
 Lot's Choice  
 Jacob and Esau  
 Joseph the Dreamer  
 Mary and Martha  
 Parable of a Family

**Love Your Neighbor**  
 (PAGE 82)  
 King David's Table  
 Five Friends  
 Who Is My Neighbor?  
 Parable of the Sheep and Goats  
 Daily Bread

**PEACE WITH CREATION**

**Nature Trail**  
 (PAGE 20)  
 God Creates  
 Wolves and Lambs  
 Job and the Whirlwind  
 Parable of the Mustard Seed  
 A New Creation

**Let It Grow**  
 (PAGE 44)  
 Prison to Palace  
 Jubilee  
 Ruth and Naomi  
 Song of Creation  
 Parable of the Sower

**Water Wonders**  
 (PAGE 58)  
 The Red Sea  
 The Promised Land  
 Cast Your Nets  
 Wedding Wonders  
 Storm at Sea

## Nature Gamers

(2 or more players)

**Supplies:** timer, other supplies as noted in the PLAY options

Remove the title card, the three "Let's Play" Cards, and the three "Let's Pray" Cards. Shuffle the remaining cards and place them in a pile, art-side up.

On a turn, flip over a card and complete the **PLAY** option (🕒) as quickly as possible, and then choose another card. See how many you can complete in 30 seconds (or longer, if desired). You can choose to skip one PLAY option during a turn. Keep all the cards that you completed. Return the cards you didn't complete to the bottom of the pile.

Play until each player has had three turns (two turns if more than three players). The player who collects the most cards wins.

Card art by Ying Hui Tan

the PEACE TABLE

## Go Fish

(2 or more players)

Remove the cover card. Shuffle and deal out five cards to each player, art-side down. Lay the rest of the cards in a draw pile, art-side down. Look at the art side of your cards. If you have three matching pictures, lay them down in front of you.

On a turn, ask another player for a type of card. For instance, "Kyla, do you have a card with an animal?" If so, Kyla would give you all her cards with animals on them and you can ask again. If she has none, Kyla says, "Go fish." Choose one card from the draw pile. If it has an animal, your turn continues, and you can ask another player for a type of card. Once you have three cards with matching pictures, lay them down. Play until all cards have been matched in groups of three. (If you run out of cards in your hand and there are still cards left in the draw pile, draw five more cards from the pile or whatever is left if less than five.)

**Sample things to ask for:** card with a child, card with someone wearing yellow, card with food, card with a cloud.

Card art by Ying Hui Tan

the PEACE TABLE

## Memory Game

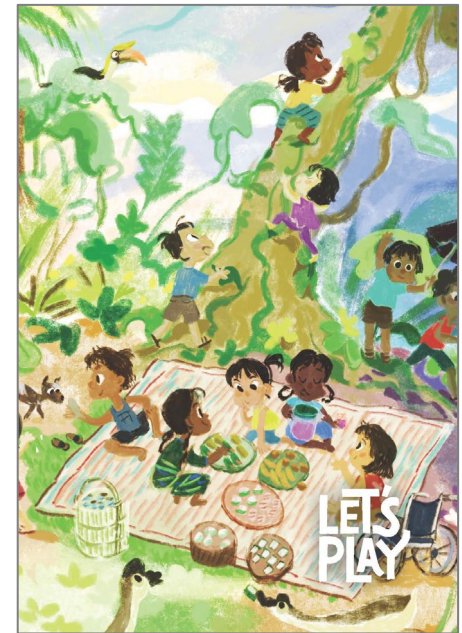
(2 or more players)

**Basic:** Remove title card and one of each type of illustration so that there are only two cards with the same art. Shuffle and lay the remaining cards art-side down in a grid. Turn over two cards to try to make a match. If so, collect them and go again. If not, turn the cards back over and play passes to the next person. Play until all pairs are matched.

**Challenge:** Remove title card. Lay all shuffled cards art-side down in a grid. On a turn, flip over three cards. Do they all match? If so, collect them and go again. If not, turn the cards back over and play passes to the next person. Play until all sets of three cards have been matched.

Card art by Ying Hui Tan

the PEACE TABLE



## Nature Breath Prayers

Go outside and sit near a tree, garden, or flowerbed. Breathe deeply and slowly, paying attention to the smells, sights, and sounds around you. As you breathe in, say or think, "Creator God." As you breathe out, say or think, "Give me peace." Repeat slowly 5-10 times.

## Leaf Prayers

Collect leaves. For each leaf, say a prayer for a family member or friend.

## Wipe-Away Prayers

Write a word or draw a picture in sand or soil to represent something you are sorry for doing or saying. Smooth out the sand and say, "God forgives me and loves me."

## Alphabet Praise

Praise God for something in nature that begins with each letter of the alphabet. Can you praise God from A to Z?

Card art by Joanne Robertson

the PEACE TABLE

## Water Blessings

Pour water over a family member's hands as you say a prayer of blessing for them.

## Nature Movers Prayer

Go outside. Use movement as you pray. Reach down and touch the ground as you ask for God's help. Reach your hands out to the side as you pray for people you love. Reach your arms toward the sky as you say things you are thankful for. Dance freely to express joy.

## Creation Instruments Prayer

Use items from nature to make instruments. Tap sticks or shells. Rub leaves together. Put small stones into a jar with a lid and shake it.

## Prayer Trek

Ask a parent or caregiver to go with you around your neighborhood. Pray for people who live, work, or play in the places you pass.

Card art by Joanne Robertson

the PEACE TABLE

## Creation Color Prayers

Thank God for things in creation that are red, yellow, orange, green, blue, purple, brown, black, and white.

## Grass Prayers

Pick a handful of grass. Form the blades of grass into the first letter of someone's name as you pray for that person. Continue with other people. Don't forget to pray for yourself!

## Observers Prayer

Choose a nature item, such as a shell, stone, flower, pine cone, or leaf. Look at it closely for several minutes. Thank God for creating such an amazing thing. What might you learn about God or yourself from that part of creation?

## Bubble Prayer

Feeling blue or worried? Go outside with some bubbles. Share a worry with God as you blow a stream of bubbles. Thank God for caring about you as you watch them float away.

Card art by Joanne Robertson

the PEACE TABLE



LET IT GROW

**Time to Plant**

Mark 4:1-20  
The Peace Table, pages 210-211

A farmer went out to plant seeds.

**Care**  
Plant seeds in a pot or garden. Or care for plants that are already growing by removing weeds or watering them.

**Learn**  
What types of farms are there? What jobs do farmers do? Search online or in books to find out.

**Play**  
Draw 10 seeds. *Challenge:* As you draw, name 10 things that grow from seeds.

Card art by Kate Cosgrove

the PEACE TABLE

LET IT GROW

**Good Soil**

Mark 4:1-20  
The Peace Table, pages 210-211

A few seeds fell on good soil. They grew and grew, producing 30, 60, or even 100 times more than what was planted.

**Enjoy**  
Eat fruits and vegetables that contain seeds, such as apples, strawberries, peppers, snap peas, and tomatoes. Count the seeds!

**Learn**  
Watch time-lapse videos of seeds growing (YouTube).

**Play**  
Count by 100's until you reach 1,000. *Challenge:* Count by 30's or 60's.

Card art by Kate Cosgrove

the PEACE TABLE

LET IT GROW

**Kingdom Messages**

Mark 4:1-20  
The Peace Table, pages 210-211

What the farmer is spreading is the message about the Kingdom of God.

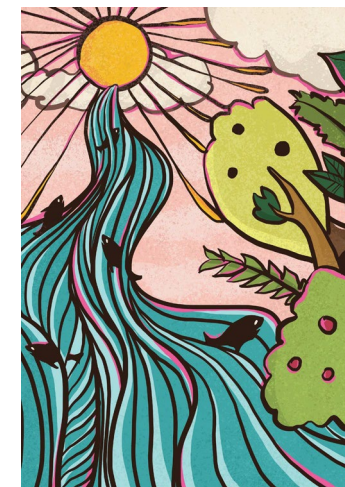
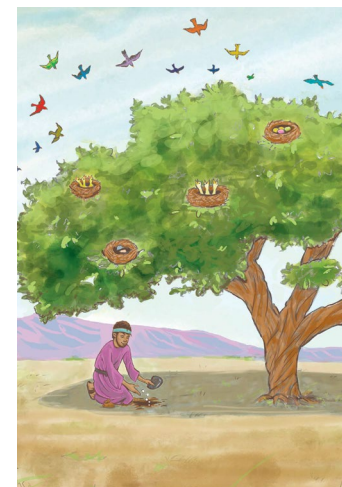
**Pray**  
Use one of the creation prayer ideas from the three "Let's Pray" Cards in this deck.

**Enjoy**  
Whisper a "good news" message to the person next to you, who will whisper it to the next person and so on until everyone hears it. *Ideas:* God loves you. You are special. God is with you.

**Play**  
Say, "God loves \_\_\_\_\_ (person's name)" for 10 people you know.

Card art by Kate Cosgrove

the PEACE TABLE





# How You Can Participate

**Have a question as we present?**

**Please ask it in the Q & A feature as you think of it.**



# Follow the Peace Path Surveys

In late summer, these will be shared via

- [ShineCurriculum.com](http://ShineCurriculum.com)
- Shine Everywhere newsletter
- Shine Everywhere Facebook group
- *Shine: Living in God's Light* Facebook page
- [ShineEverywhere.com](http://ShineEverywhere.com)



# Follow the Peace Path Roundtables

**Apply to be in a roundtable for card deck feedback**

**Four Peace Path Roundtables will meet three times:**

- Late May
- Mid-summer
- End of summer

**Four congregations per roundtable**

**One person from the congregation commits to**

1. Attend the roundtable via Zoom
2. Bring one or two parents along who are using the card deck at home

**Apply at [ShineEverywhere.com](https://ShineEverywhere.com).**





# Leaders Listening Cohorts

**Apply to be in a Leaders Listening Cohort\***

**Cohorts will meet weekly for five weeks in April and early May.**

**This is for pastors who want to learn what parents want from the church regarding their children's faith formation. Includes:**

- Practical help as you make your listening plan**
- Accompaniment and encouragement**
- Accountability for accomplishing your goals**
- One individual coaching session with Shana**

**Apply at [ShineEverywhere.com](http://ShineEverywhere.com).**



# Join Us and Stay Informed



**Facebook:** [@facebook.com/shinecurriculum/](https://facebook.com/shinecurriculum/)  
*Groups:* Shine Everywhere, Teachers Helping Teachers Shine



**Instagram:** [@instagram.com/shinecurriculum4kids/](https://instagram.com/shinecurriculum4kids/)



**Pinterest:** [@pinterest.com/Shinelivingingo](https://pinterest.com/Shinelivingingo)



**YouTube:** Shine Curriculum channel



# Question & Response

Please ask your questions in the Q & A feature

# Thank you!



## We look forward to working with you!

Our closing prayer is from

***Engage Every Family: A Parish Guide to Integrated Faith Formation*** by Denise Utter

